



Medetomidine Hydrochloride

ANADA 200-610

Injection - 1 mg/mL

Sedative and analgesic for dogs

Medetomidine Hydrochloride is indicated for use as a sedative and analgesic to facilitate clinical examinations, clinical procedures, minor surgical procedures with the exception of those requiring muscle relaxation, and minor dental procedures where intubation is not required, in dogs over 12 weeks of age. The IV route of administration is more efficacious for dental care.

Dosage and Administration:

Medetomidine Hydrochloride should be administered at the rate of 750 µg IV or 1,000 µg IM per square meter of body surface. See chart to the right.

See package insert for full information on side effects, precautions, warnings and contraindications.

Storage:

Store between 20-25°C (68-77°F) with excursion permitted between 15-30°C (59-86°F).

Body weight (kg) IV Administration	Injection Volume (mL)	Body weight (kg) IM Administration
1.5-2.2	0.1	
2.3-3.5	0.15	1.8-2.3
3.6-5.1	0.2	2.4-3.3
5.2-6.9	0.25	3.4-4.5
7.0-9.9	0.3	4.6-6.4
10.0-14.4	0.4	6.5-9.4
14.5-19.5	0.5	9.5-12.7
19.6-25.1	0.6	12.8-16.3
25.2-31.1	0.7	16.4-20.2
31.2-37.6	0.8	20.3-24.4
37.7-44.4	0.9	24.5-28.9
44.5-55.3	1.0	29.0-36.1
55.4-71.1	1.2	36.2-46.3
71.2-88.2	1.4	46.4-57.3
88.3+	1.5	57.4-75.8
	2	75.9+



*Each mg of medetomidine contains 0.5mg of dexmedetomidine (active ingredient) and 0.5mg of levomedetomidine (inactive compound)



Medetomidine Hydrochloride

(medetomidine hydrochloride)

Sterile Injectable Solution

1.0 mg/mL

ANADA 200-610, Approved by FDA

Sedative and Analgesic

For intramuscular and intravenous use in dogs only

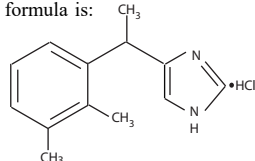
Modern Veterinary Therapeutics

CAUTION

Federal law restricts this drug to use by or on the order of a licensed veterinarian.

DESCRIPTION

Medetomidine Hydrochloride (medetomidine hydrochloride) is a synthetic α_2 -adrenoreceptor agonist with sedative and analgesic properties. The chemical name is (\pm) -4-[1-(2,3-dimethylphenyl)ethyl]-1H-imidazolemonohydrochloride. It is a white, or almost white, crystalline, water soluble substance having a molecular weight of 236.7. The molecular formula is $C_{13}H_{16}N_2 \cdot HCl$ and the structural formula is:



Each mL of Medetomidine Hydrochloride contains 1.0 mg medetomidine hydrochloride, 1.0 mg methyl parahydroxybenzoate, 0.2 mg propylparahydroxybenzoate, 9.0 mg sodium chloride, up to 5.0 mg sodium hydroxide, up to 5.0 mg hydrochloric acid 0.1N, water for injection, q.s.

CLINICAL PHARMACOLOGY

Medetomidine is a potent non-narcotic α_2 -adrenoreceptor agonist which produces sedation and analgesia. These effects are dose dependent in depth and duration. Profound sedation and recumbency, with reduced sensitivity to environmental stimuli (sounds, etc.), are seen with medetomidine. The pharmacological restraint and pain relief provided by medetomidine facilitates handling dogs and aids in the conduct of diagnostic or therapeutic procedures. It also facilitates minor surgical procedures (with or without local anesthesia) and dental care where intubation is not required. Spontaneous muscle contractions (twitching) can be expected in some dogs sedated with medetomidine. With medetomidine administration, blood pressure is initially increased due to peripheral vasoconstriction and thereafter drops to normal or slightly below normal levels. The initial vasopressor response is accompanied by a compensatory marked decrease in heart rate mediated by a vagal baroreceptor mechanism. The bradycardia may be partially prevented by prior (at least 5 minutes before) intravenous administration of an anticholinergic agent (see **PRECAUTIONS**). A transient change in the conductivity of the cardiac muscle may occur, as evidenced by atrioventricular blocks. Cardiovascular changes (such as profound bradycardia and second degree heart block) equally affect both heartworm negative and asymptomatic heartworm positive dogs. Respiratory responses include an initial slowing of respiration within a few seconds to 1-2 minutes after administration, increasing to normal within 120 minutes. An initial decrease in tidal volume is followed by an increase. When medetomidine was given at 3 and 5 times the recommended dose IV, and 5 and 10 times IM, effects were not intensified but were prolonged.

INDICATIONS

Medetomidine Hydrochloride is indicated for use as a sedative and analgesic in dogs over 12 weeks of age to facilitate clinical examinations, clinical procedures, minor surgical procedures not requiring muscle relaxation, and minor dental procedures where intubation is not required. The IV route of administration is more efficacious for dental care.

WARNINGS

Keep out of reach of children. Not for use in humans.

Medetomidine hydrochloride can be absorbed and may cause irritation following direct exposure to skin, eyes, or mouth. In case of accidental eye exposure, flush with water for 15 minutes. In case of accidental skin exposure, wash with soap and water. Remove contaminated clothing. If irritation or other adverse reaction occurs (e.g., sedation, hypotension, bradycardia), seek medical attention.

In case of accidental oral exposure or injection, seek medical attention.

Precaution should be used while handling and using filled syringes.

Users with cardiovascular disease (e.g., hypertension or ischemic heart disease) should take special precautions to avoid any exposure to this product.

The safety data sheet (SDS) contains more detailed occupational safety information. To report suspected adverse drug events, for technical assistance or to obtain a copy of the SDS, contact Modern Veterinary Therapeutics, LLC at 407-852-8039.

For additional information about adverse drug experience reporting for animal drugs, contact FDA at 1-888-FDA-VETS or online at <http://www.fda.gov/AnimalVeterinary/SafetyHealth>

NOTE TO PHYSICIANS

This product contains an α_2 -adrenergic agonist.

CONTRA-INDICATIONS

Medetomidine Hydrochloride should not be used in dogs with the following conditions: cardiac disease, respiratory disorders, liver or kidney diseases, dogs in shock, dogs which are severely debilitated, or dogs which are stressed due to extreme heat, cold or fatigue.

PRECAUTIONS

In extremely nervous or excited dogs, levels of endogenous catecholamines are high due to the animal's state of agitation. The pharmacological response elicited by α_2 -agonists (e.g., medetomidine) in such animals is often reduced, with depth and duration of sedative/analgesic effects ranging from slightly diminished to nonexistent. Highly agitated dogs should therefore be put at ease and allowed to rest quietly prior to receiving Medetomidine Hydrochloride. Allowing dogs to rest quietly for 10 to 15 minutes after injection may improve the response to Medetomidine Hydrochloride. **In dogs not responding satisfactorily to treatment with Medetomidine Hydrochloride, repeat dosing is not recommended.** Caution should be exercised when handling sedated animals. Handling or any other sudden stimuli may cause a defense reaction in

an animal that is sedated. Medetomidine Hydrochloride is a potent α_2 -agonist which should be used with caution with other sedative or analgesic drugs. Additive or synergistic effects are likely, possibly resulting in overdose. Although bradycardia may be partially prevented by prior (at least 5 minutes before) intravenous administration of an anticholinergic agent, the administration of anticholinergic agents to treat bradycardia either simultaneously with medetomidine or following sedation with medetomidine could lead to adverse cardiovascular effects. Special care is recommended when treating very young animals and older animals. Information on the possible reproductive effects of medetomidine is limited; therefore, the drug is not recommended for use in dogs used for breeding purposes or in pregnant dogs.

ADVERSE REACTIONS

As with all α_2 -agonists, the potential for isolated cases of hypersensitivity including paradoxical response (excitation), exists. Incidents of prolonged sedation, bradycardia, cyanosis, vomiting, apnea, death from circulatory failure with severe congestion of lungs, liver, kidney and recurrence of sedation after initial recovery have been reported.

SIDE EFFECTS

Bradycardia with occasional atrioventricular blocks will occur together with decreased respiratory rates. Body temperature is slightly or moderately decreased. Urination typically occurs during recovery at about 90 to 120 minutes posttreatment. In approximately 10% of treated dogs, occasional episodes of vomiting occur between 5 to 15 minutes posttreatment. An increase in blood glucose concentration is seen due to α_2 -adrenoreceptor-mediated inhibition of insulin secretion.

ANIMAL SAFETY

In target animal safety studies, medetomidine was tolerated in dogs at up to 5 times the recommended IV dose and up to 10 times the recommended IM dose. A single IV administration of 10 times the recommended dose in dogs caused a prolonged anesthesia-like condition accompanied by an increased level of spontaneous muscle contractions (twitching). Repeated IV doses of 3 or 5 times the recommended dose caused a profound sedation, bradycardia and reduced respiratory rates over several hours, accompanied in some animals by occasional spontaneous twitching. Death (approximately 1 in 40,000 treatments) has been noted in clinical use with doses at 2 times the recommended dose of Medetomidine Hydrochloride.

DOSAGE AND ADMINISTRATION

Medetomidine Hydrochloride should be administered at the rate of 750 mcg IV or 1000 mcg IM per square meter of body surface. Use the table below to determine the correct dosage on the basis of body weight.

Body Weight (lb) IV Administration	Injection Volume (mL)	Body Weight (lb) IM Administration
3-4	0.1	
5-7	0.15	4-5
8-11	0.2	6-7
12-15	0.25	8-9
16-21	0.3	10-14
22-31	0.4	15-20
32-43	0.5	21-27
44-55	0.6	28-35
56-68	0.7	36-44
69-82	0.8	45-53
83-97	0.9	54-63
98-121	1.0	64-78
122-156	1.2	79-101
157-194	1.4	102-126
195+	1.6	127-165
	2.0	166+

Following injection of Medetomidine Hydrochloride, the dog should be allowed to rest quietly for 15 minutes.

STORAGE

Store at 20-25°C (68-77°F). Excursions between 15-30°C (59-86°F) are allowed. Protect from freezing. Use within 28 days of the first puncture.

HOW SUPPLIED

Medetomidine Hydrochloride is supplied in 10-mL, multidose vials containing 1.0 mg of medetomidine hydrochloride per mL.
NDC 015914-005-01 - 10 mL vials

TAKE
TIME



OBSERVE
LABEL
DIRECTIONS

Manufactured for:

Modern Veterinary Therapeutics, LLC
Miami, Florida 33186 - USA

Made in Germany

**Modern
Veterinary
Therapeutics**